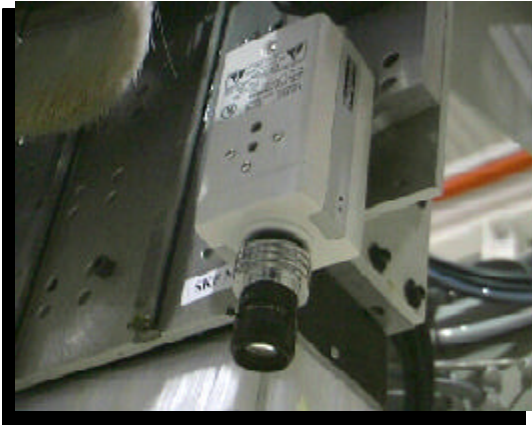


# AutoView 2000

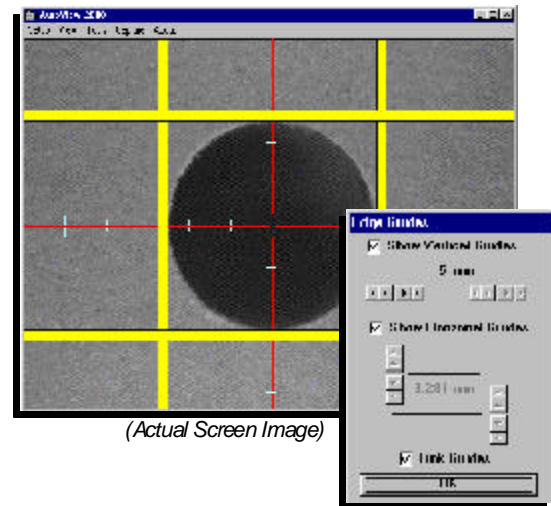
## Visual Measurement & Calibration System



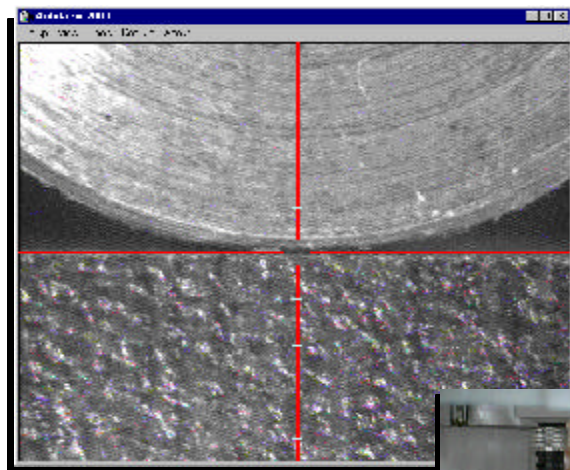
The **AutoView 2000** system utilizes a high-resolution industrial CCTV camera mounted directly to the machine's head. The camera moves with the head in the X, Y and Z axis, to perform measurements surpassing an accuracy of 1/80mm+. The camera image is then displayed in real time on the operator's computer screen in a window that can be positioned next to the machine's manual control window.

### Part Measurements:

The AutoView 2000 system can make accurate part measurements, measure hole sizes, check distance between holes, and check to confirm parts are both straight and square. The AutoView 2000 system can also receive measurement data and camera directly from the machine control software whenever used in conjunction with the PCM2000 replacement controller from AutoCut Research.



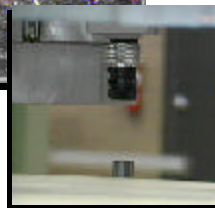
(Actual Screen Image)



(Actual Screen Image)

### System Includes:

High resolution industrial CCTV camera  
Precision camera lens  
75' super-flex video cable  
PCI or AGP video-capture card  
AutoView 2000 software CD



### Machine Alignment Testing & Setup:

The AutoView 2000 system can be used to check for proper **pin alignment**. Simply position the camera over the first pin with the edge of the pin even with the display crosshairs. Now move the camera straight down the row of remaining pins. Any pin alignment problems will become instantly apparent. The **ball screw accuracy** can be quickly tested and adjusted by using the camera to check position at evenly spaced intervals along a measuring tape. The AutoView 2000 system can also be used to accomplish **axis positioning repeatability** tests, or used to perform a quick check to confirm accurate **part placement** before parts are machined.



**For More information call (336) 474-0451**

**AutoCut Research**  
9817 East U.S. Hwy. 64  
Thomasville, NC 27360  
Sales@Autocutresearch.com